

RSD ONE TESTER, MANY SOLUTIONS

Rockwell, Superficial Rockwell and Brinell
Conform to **ASTM-ISO** standards



- The first portable hardness tester conform to **ASTM E-18, ASMT E-10** and **ISO 6508, ISO 6506**
- Automatic clamping system for secure stability on every test piece, self-aligning on round and flat surfaces
- It works in any direction; even inverted
- Original and patented AFFRI vertical measurement system®
- Equipped with a unique static load force generated by 2 incremental static load cells
- Constant high repeatability and accuracy in every test condition



USER FRIENDLY

Pulling one single start lever the measure will appear in few seconds. It is so simple and easy to use that there is no need for any particular preparation by the operator.

1. Identify the test area and place the hardness tester on the test sample
2. locking the magnetic lever the tester will strongly adhere to the test piece for the entire test cycle
3. Start the test and in 4 seconds the result will appear on the display scale or dial gauge

LCD graphic display for multi scale vision, simultaneous conversion on many scales, tolerance setting, statistic, temperature measure, depth indentation thickness, complete statistic, histogram, memory data. RS 232 C and USB outputs for printer.

RSD Magnetic Solutions

RSD MAG



460L (180mm / 7.1" height capacity)



670H (390mm / 15.3" height capacity)



Combine the RSDMAG tester with two different size of stand support in order to have a regular bench top tester based on your needs. The AFFRI RSDMAG has no limits on samples geometry and largeness. It is completely uninfluenced by direction so that it is operative up to 360° positioning and is not affected by any external source of vibration; It does not need to be leveled.

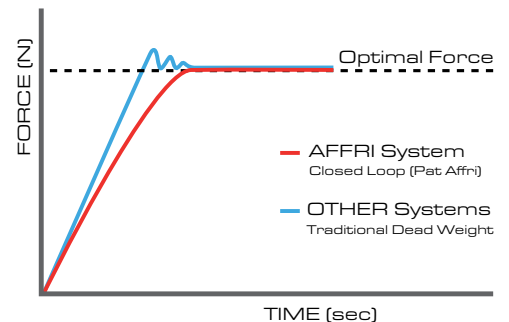


LOAD CELL TECHNOLOGY

The exclusive Affri latest generation of load cells control load forces, which are automatically programmed and controlled at each test assuring perfect linearity in every range eliminating the problems associated with dead weight systems on traditional testers.

The force by load cell assure absolute accuracy at all test conditions without any equal in the world. Results are not affected by any structural deflection, misalignment or vibration. The system can also operate in an inclined position.

The R. & R. data is at the top of its class and not surpassed by any other competitor under the same test conditions.



RSD Bench Top Solutions

206



For very small or medium size samples

330



For bulky samples

331



For ring shape samples



AFFRI® CLAMPING SYSTEM

The clamping system assures perfect stability of any test piece throughout the test cycle. Secure contact with the specimen is always maintained, even in the unlikely event of any specimen movement during the operation cycle.



ABSOLUTE BASE

A wide and stable work holder plate to support masses beyond 2000 kg / 4409.2 lb eliminate instability problems, maintenance and adjustments. For bulky test pieces which cannot be easily received by the regular bench top testers.



ACCURACY AND SURENESS

The constant clamping surface assures absolute accuracy even in case of structural deflection. Accurate measurements, even on the first test, eliminate the need for multiple repeated tests.

670H



460L



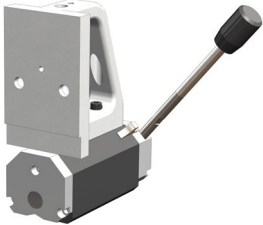
RSDMAG D2 (from 60 to 187.5 kgf)

RSDMAG D4 (from 15 to 45 kgf)

Combine the RSDMAG head with the base that better fit with the shape's geometry of your test sample.

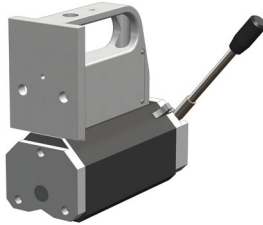


SMX30



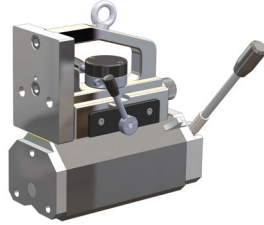
300mm / 11.8" magnetic base for HR/HB measures up to 20mm / 0.8" sample's thickness

SMX50



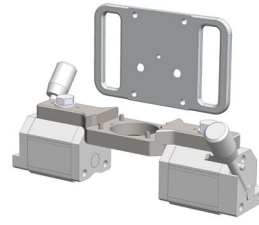
500mm / 19.7" magnetic base for HR/HB measures less than 20mm / 0.8" sample's thickness

SMX55



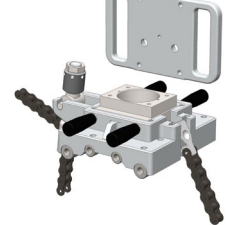
Magnetic base with 10mm / 0.4" horizontal stroke sliding head for multi indentation

SMX70



Double magnetic clamping base for big or small diameters round shape samples

SMX80



Chain clamping base for non ferrous samples

RSDMAG D2/30 - D4/30



RSDMAG D2/50 - D4/50



RSDMAG D2/55 - D4/55



RSDMAG D2/70 - D4/70



RSDMAG D2/80 - D4/80



	HEAD RSDMAG D2	HEAD RSDMAG D4
ACCURACY	Better than 0.5 %	
TEMPERATURE RANGE	From 10 °C to 35 °C	
DATA OUTPUT	RS 232 C (USB as option)	
POWER SUPPLY	100/110 or 220/240 V / 50÷60 Hz (Specify the voltage when ordering the machine)	
PRINCIPLE OF OPERATION	Dual Load Cell	
PRELOAD	98.07 N (10 kgf)	29.42 N (3 kgf)
FORCE RANGE	Rockwell 588.4 - 980.7 - 1471 N (60 - 100 - 150 kgf) Brinell (at request) 612.9 - 1226 - 1839 N (62.5 - 125 - 187.5 kgf)	Superficial Rockwell 147.1 - 294.2 - 441.3 N (15 - 30 - 45 kgf) Brinell (at request) 153.2 - 306.5 N (15.6 - 31.2 kgf)
FEASIBLE TESTS	Rockwell HRC A - D - B - F - G - I - M - R Brinell HB 30 - HB 10 - HB 5 Break N/mm ²	Superficial Rockwell HRN - HRT
STANDARDS	ASTM-E18 / EN-ISO 6508-2 / EN-ISO 6507-2 / EN-ISO 6506-2 / JIS	

	460L (Stand support for RSDMAG)	670H (Stand support for RSDMAG)
HEIGHT CAPACITY	180 mm / 7.1"	390 mm / 15.3"
DEPTH CAPACITY	204 mm / 8.0"	232 mm / 9.1"

Made by:
 OMAG di Affri D. s.r.l
 Via M. Tagliaferro 8
 21056 INDUNO OLONA - VARESE - ITALY
 Tel. +39 0332 200546
 Fax +39 0332 203704
 E-Mail info@omagaffri.com

Europe/Asia:
 AFFRI®
 Via M. Tagliaferro 8
 21056 INDUNO OLONA - VARESE - ITALY
 Tel. +39 0332 201533 +39 0332 206289
 Fax +39 0332 203621
 E-Mail: info@affri.com - www.affri.com

America:
 AFFRI Inc.
 111 S. Lombard Rd Unit #4
 ADDISON, IL 60101 - USA
 Tel. 224 374 0931 - 630 303 1588
 E-Mail: sales@affriusa.com
 www.affri.com