

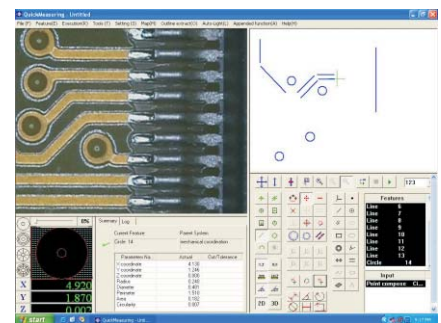
- ★ The linear scale displayer accuracy resolution can reach up to 1um to meet with high accuracy demand.
- ★ Adopting high accuracy granite stand(precision level (00 grade) to ensure stable operation and improve measuring microscope work efficiency.
- ★ SVM series measuring microscope owns data measurement, micro-magnification, input and output displaying etc. multiple data processing functions.
- ★ Adopting super-precise digital color CCD camera (with C-mount adapter) to input and output measuring result, data and save image to meet the demands of different customers.
- ★ Adopting dedicate measuring software QuickMeasuring2.0 with image window to do the auto edge detection operation, no programming, conduct the measurement by clicking, easy for operation.



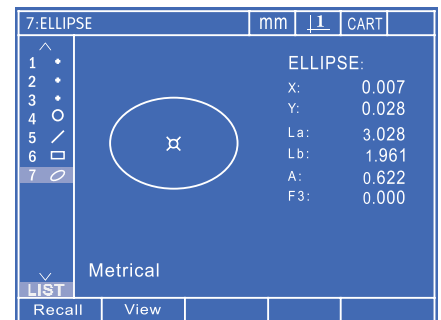
Digital Measuring Microscopes SVM2010(#532*202)

Specification:

Product Name	Digital Measuring Microscopes	
Model	SVM2010	SVM2515
Code#	532*202	532*252
Metal Table Size	404 x 228mm	450x280mm
Glass Table Size	260 x 160mm	306 x 196mm
X,Y,Z-axis Travel	200 x100x100mm	250 x150 x 100mm
X,Y,Z-axis Resolution	0.0005mm	0.0005mm
X,Y,Z-axis Accuracy	± (3+L/200)um	± (3+L/200)um
Net Height	110Kg	120Kg
Dimension(L x W x H)	530x540x850mm	530x540x850mm
Eyepiece	High-eye-point and wide-field Eyepiece SWF10/23	
Objectives	Zoom Click Stereo Objectives:0.7x~4.5x	
Total Magnification	Optical Magnification:7x~45x	
Microscope head	Trinocular microscope head, Inclined at 30°,	
	Interpupillary Distance Adjustment Rang 52mm~76mm	
Illuminators	4-Dvision LED lightsource	
Digital Magnification System	Sony1/2"CCD Camera MC3	
	1x CCD adapter	
Digital Measuring System	Digital magnification:15x~350x	
	Dell PC with 17" quadrate monitor	
Option Accessories	Digital readout DP300	
	2.5D English software QuickMeasuring 2.0 Version (QM2.0)	
Option Accessories	Working Cupboard ST03, Rotary Table RT2 , Rotary Table RT3	
	Auxiliary Objectives:0.5x,0.7x,1.5x,2x	



Measuring Software QuickMeasuring



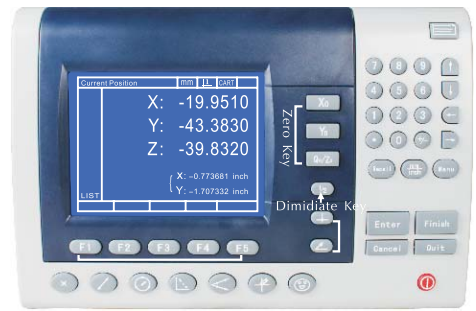
Data processor measuring interface



4-Dvision LED Lightsource

Digital Readout Product Character

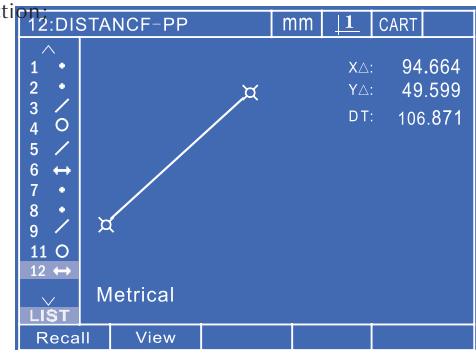
- Adopt the width screen to display information, and display in sufficiency. It is more convenient for users operator and learning;
- Support three languages: Simple Chinese, Complicated Chinese and English;
- The counting accuracy of the sampling circuit of linear scale can reach to 24 bit, and the frequency of counting can reach to 1MHZ, it is correspond to the counting speed is almost 5 meters per second in 1 um distinguish rate.
- The ability of anti-jamming of power and signal all can reach to over 2500 voltage;
- The input voltage is from AC100V to 240V, and it all can work well;
- Small cubage, light weight, the outside dimension: 287mmx196mmx56mm, the weigh is about 1.5kg.



DP300

Digital Readout Main Functions:

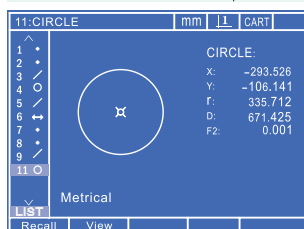
- Measurement of point, line, circle, angle, distance, rectangle and screw thread, preset and construction. Sampling points maximum up to 50.
- Coordinate skew and movement ,it is more convenient that the operator can skew position of work-pieces for measuring, which can reduce adjust time obviously;
- Clearance function can delete list, adjustment, and all ;
- Obverse or Opposite direction counting function, according to the operators requirement;
- Half function, rapidly determine to display 1/2 value, and confirm midpoint of section;
- Permission function: Advanced setup can be done after right password input;
- Call function: input record ID to use existing element;
- Communication port of foot-switch or REINSHAW probe available;
- Printing: print graphic elements and 3-axis displaying value;
- RS232 output function: convey current position of linear scale to PC;
- USB output: through USB cable convey date to PC;
- Multi-display, separately display polar coordinates and Cartesian coordinates, and can display millimeter and inch , and can shift it easily;
- Linear compensation and section compensation in available;
- Z-axis can connect linear scale and rotate encoder;
- Save 100 permanent graphic elements.



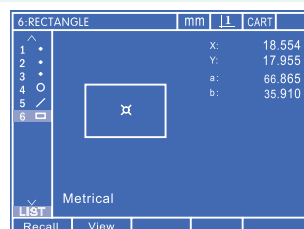
Measurement of Distance

Digital Readout Specification:

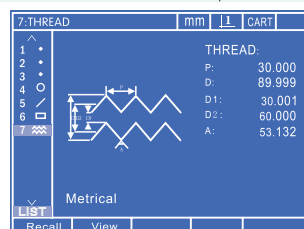
LCD size	107.8mmx17.7mm	Display Language	Chinese, English, Portuguese
size	287mmx196mmx77mm	Digital Display Range	8 Digits (With Decimal Point)
Weight	1.5Kg	Display axis	3-axis(X, Y, Z/Q)
Input Voltage	AC110V~240V	Z/Q-axis Display Model	Length or Angle
Power Consumption	15W	Angle Display Model	Degree, Minutes and Second or Degree
Operating Temperature	0°C~40°C	Optional Resolution	1um, 2um, 5um, 0.1um, 0.2um, 0.5um
Relative humidity	<90%	Brat Rate	4800, 9600, 14400, 19200, 38400, 57600
Operate Keyboard	Sealed Silicone touch-type keyboard	Data Output Port	RS232



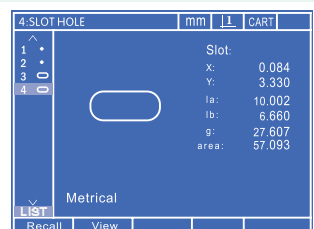
Measurement of Circle



Measurement of Rectangle



Measurement of Thread



Measurement of Slot Hole