



UMS-300 (432-113)

**Applications:**

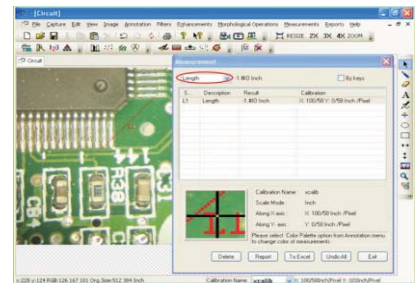
UMS-300 upright metallurgical Microscope is suitable to observe the microscopically surfaces of non-transparent objecter. It is equipped with large move range mechanical stages, reflected vertical illumination and set polarizer device in trinocular . It is has clear and high-contrast picture beautiful sculpt, convenient control and etc. It is the ideal instrument in research work in metallurgical , mineralogy, precision engineering, electronics and etc. It is suitable for scientific research, teaching demonstration in the colleges and factory.

**UMS-300 Characteristic:**

- Long working distance plan achromatic objectives(no cover glass) and wide-field eyepieces, can get clear pictures and wide view field.
- Large move range mechanical stages, move quickly and slowly.
- Coaxial coarse/fine focus system, with tensional adjustable and up stop, minimum division of fine focusing: 0.7μm.
- 6V 30W halogen lamp, adjustable brightness.
- Trinocular, can switch to observe normally or to observe polarize, can send 100% of light to the binocular eyepieces or to the top port.



UMS-310 (432-123)



Measuring Software META VISION



CCD and USB camera



Quintuple nosepiece



Eyepiece

## Standard Delivery

Standard Delivery	UMS-300(432-113)	UMS-310(432-123)	Order#
Stage	Three layer mechanical, Size: 250X230mm, moving range: 6"X6" (154X154mm)	Three layer mechanical, Size: 280X270mm, moving range: 8"X8" (204X204mm)	
Eyepiece	Wide field WF10X(Ø18mm)		432-513
Objective	Plan achromatic objective 5X/0.12		432-623
	Plan achromatic objective 10X/0.25		432-633
	Plan achromatic objective 20X/0.40		432-643
	Plan achromatic objective 40X/0.60		432-653
	Plan achromatic objective 80X/0.80		432-683
Eyepiece tube	Trinocular, Inclination of 30°, (Analyzer with field diaphragm to switch)		432-503
illumination	6V / 30W, halogen lamp, adjustable brightness		432-803
Focus system	Stage adjustable, Coaxial coarse/fine focus system, with tension adjustable and up stop, minimum division of fine focusing: 0.7um		432-703
Nosepiece	Quadruple (Frontward ball bearing inner locating)		432-603
Color Filter	Yellow, Blue, Green Color Filter, Ground glass		432-303

## Optional Accessories:

Optional Accessories	Technical Specifications	Order#
Eyepiece	Wide field WF16X(Ø11mm)	432-553
	Dividing 10X(Ø18mm) 0.1mm/Div	432*513
Objective	Plan achromatic objective 50X/0.70	432-663
	Plan achromatic objective 60X/0.75 (Spring)	432-673
	Plan achromatic objective 100X/0.85 (Spring)	432*693
	Plan achromatic objective 100X/1.25 (Spring, oil)	432-693
CCD adapter	CCD adapter 0.4X	431-733
	CCD adapter 0.5X	431-723
	CCD adapter 1X	431-713
	0.5X with dividing 0.1mm/Micrometer scale	431*723

## Dimensions Diagram:

